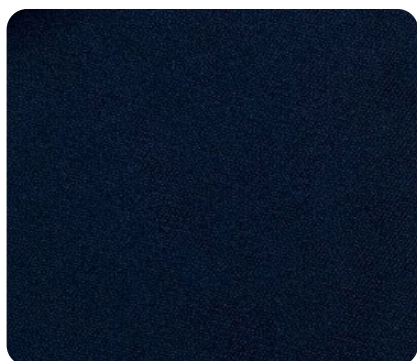
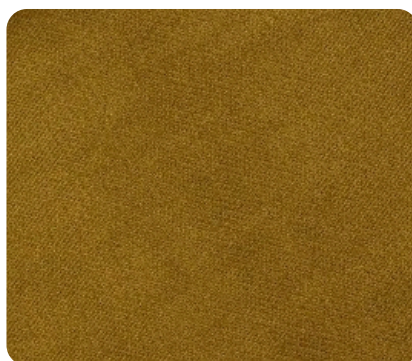


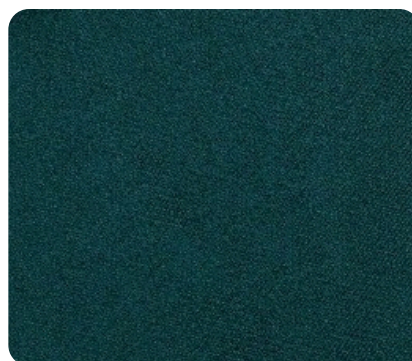
GARDEN GRUPA 3



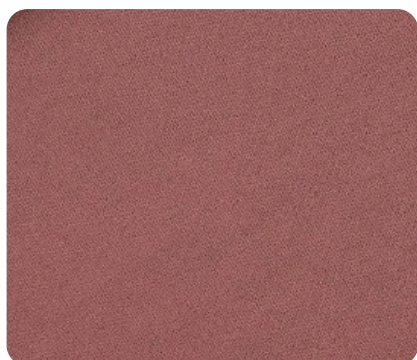
NP16 | Granatowa Hortensja



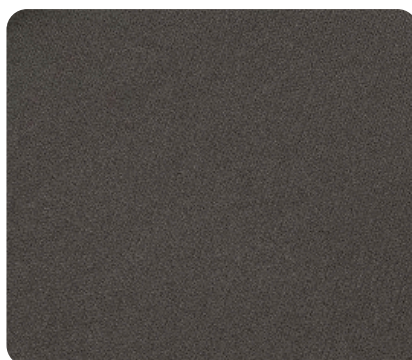
NP06 | Jesienny Liść



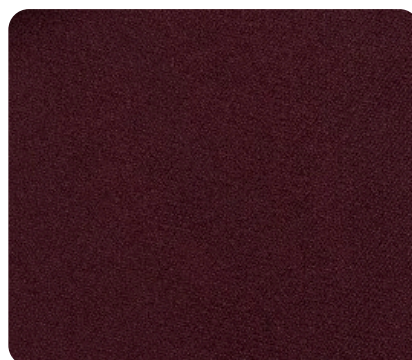
NP14 | Jodła



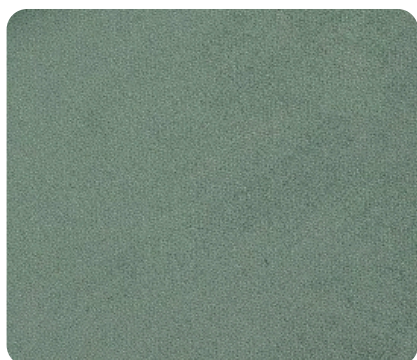
NP10 | Różowy Irys



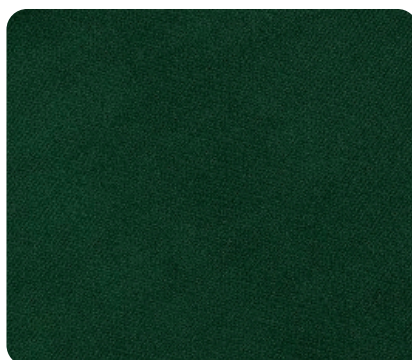
NP19 | Kora Dębu



NP09 | Malwa



NP11 | Świerk Srebrzysty



NP12 | Szmaragdowy Las

Dane techniczne: 100% Polyester | Gramatura: 341 g/m² | Martindale: 75 000



ŁATWE CZYSZCZENIE WODĄ



UTRUDNIONE WCHŁANIANIE PŁYNÓW



PRZYJAZNE ZWIERZĘTOM