

Baltimore

type: structured

INDEX OF FABRIC: 263



Sand // *Light Beige*

Khaki // *Grey Brown Melange*

Marsala // *Red*



Pistachio // *Olive*

Toffee // *Dark Beige Melange*

Cement // *Warm Grey*



Marine // *Blue Melange*

Ocean // *Navy Blue*

Antracite // *Grey Melange*



Sand // *Light Beige*

Baltimore

type: structured

INDEX OF FABRIC: 263



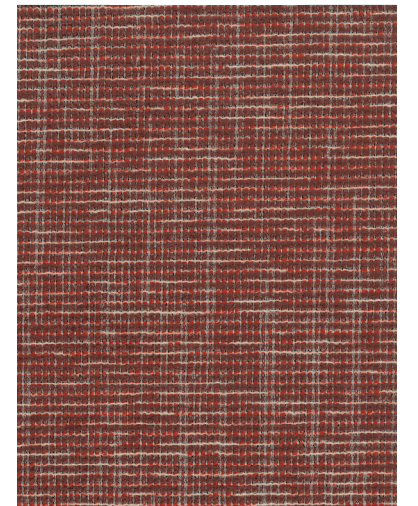
Sand // Light Beige



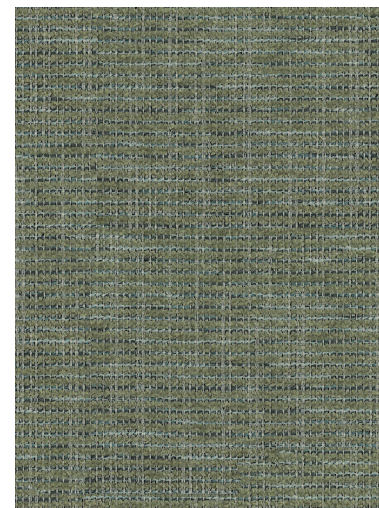
Sand // Light Beige



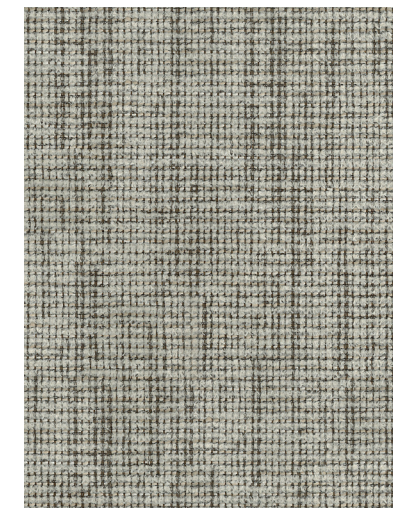
Khaki // Grey Brown Melange



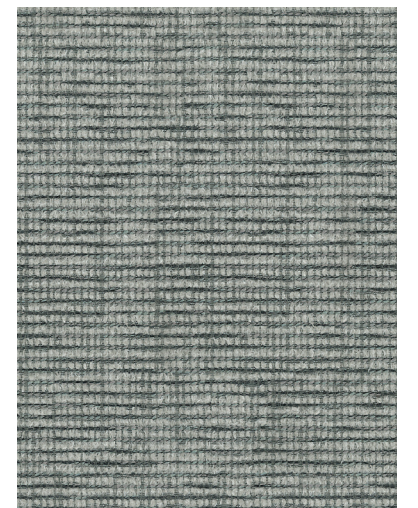
Marsala // Red



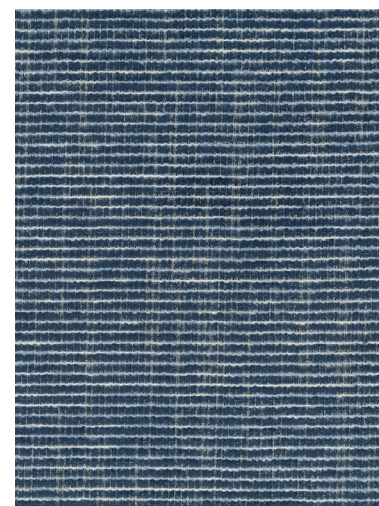
Pistachio // Olive



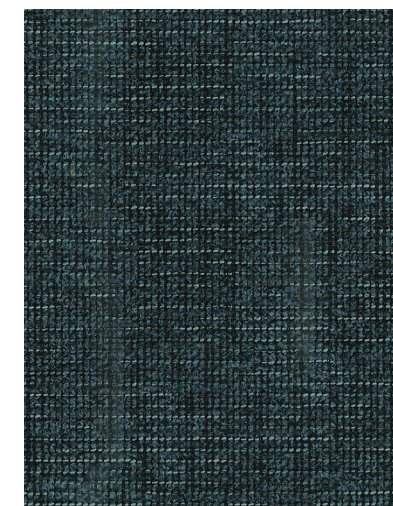
Toffee // Dark Beige Melange



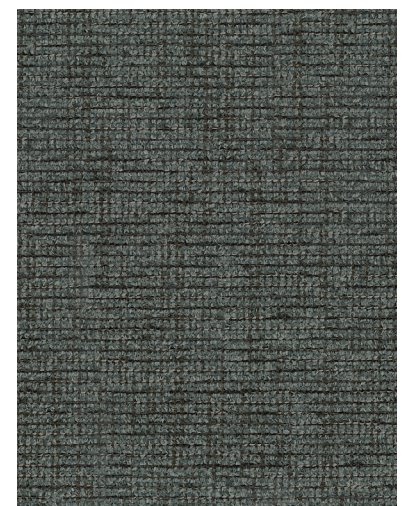
Cement // Warm Grey



Marine // Blue Melange



Ocean // Navy Blue








Antracite // Grey Melange

Baltimore

type: structured

INDEX OF FABRIC: 263

Composition Skład:	100% PES
Weight Gramatura:	420 g/m ² (+/- 5%)
Abrasion resistance Odporność na ścieranie:	>30 000 rubs / suwów
Fuzzing and pilling Mechacenie i pilling:	4
Colour fastness to artificial light Odporność wybarwień na światło:	4
Dry rubbing Tarcie suche	4
Wet rubbing Tarcie mokre	4
Seam Slippage Przesunięcie w szwie	2,0 warp / osnowa 4,0 weft / wątek
Cigarette test Test papierosa:	✓
Maintenance Konserwacja:	    



BS 5852 Part 1 -
Cigarette / EN 102-1
Cigarette / CA TB
117:2013 / NFPA 260
Cigarette



YOUR CHOICE IS A GREAT CHOICE!

The **Micadoni Pro** team is committed to offering personalized guidance in selecting exceptional fabrics and advising you on products that best reflect your vision. We invite you to get in touch and benefit from our expertise.

www.micadoni.com/contact | sales@micadonipro.com

micadoni

micadonipro.com | micadoni.com | [@micadoni.home](https://www.instagram.com/micadoni.home)

Baltimore

type: structured

INDEX OF FABRIC: 263