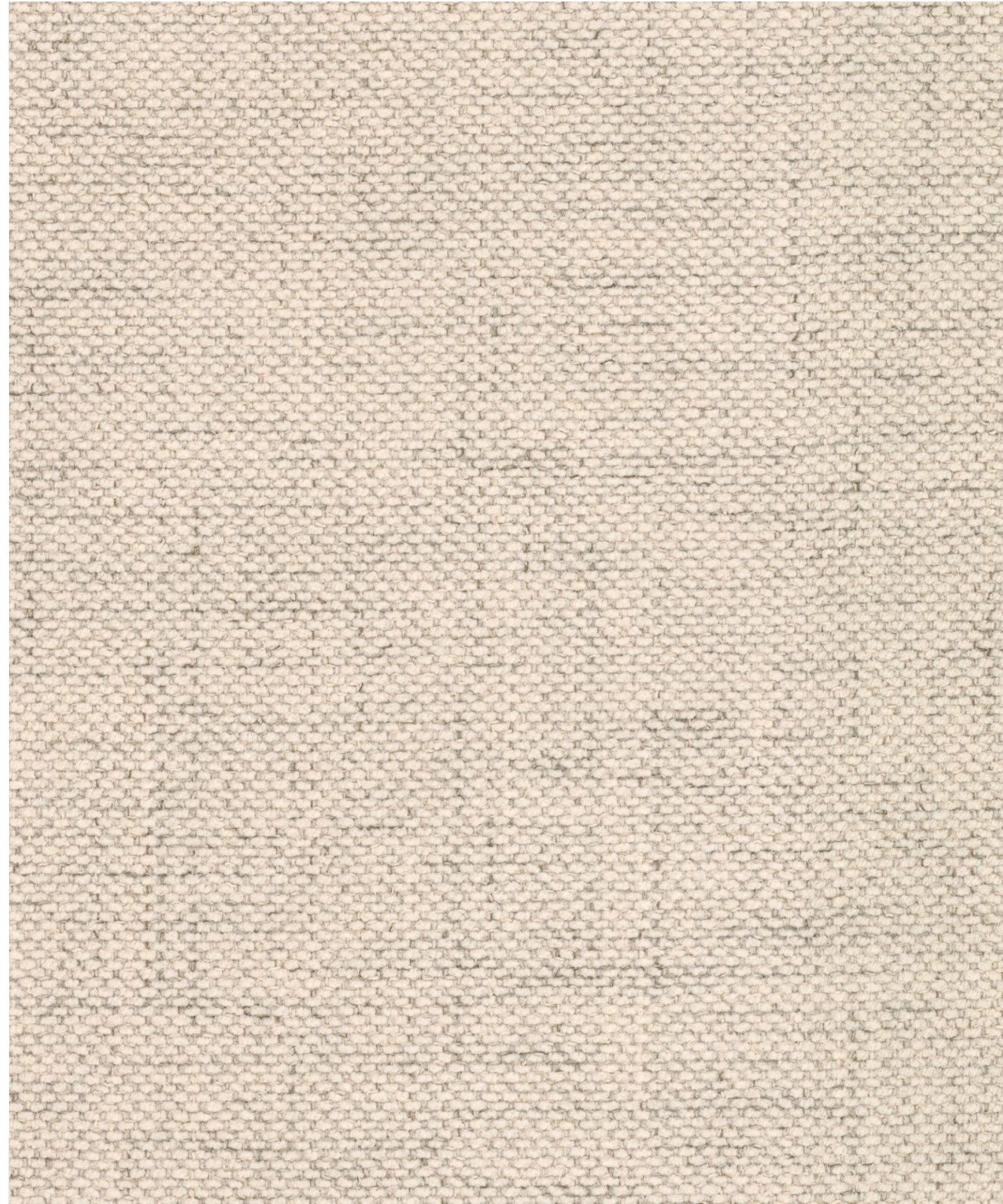


# Moly

type: structured fabric

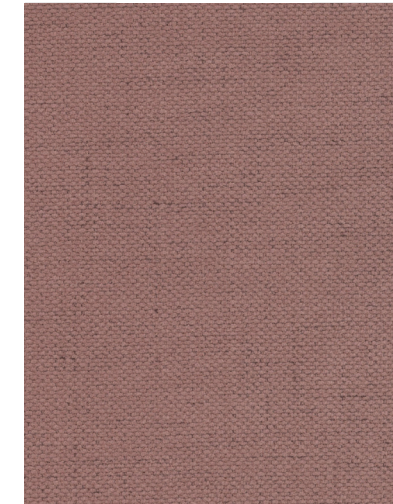
INDEX OF FABRIC: 138



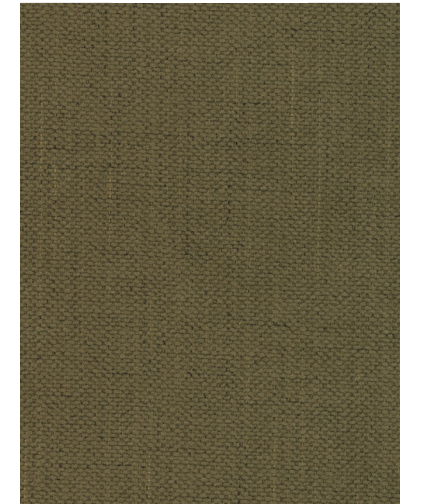
**Moly 2** // *Light Beige*



**Moly 11** // *Cappuccino*



**Moly 63** // *Dark Pink*



**Moly 38** // *Green*



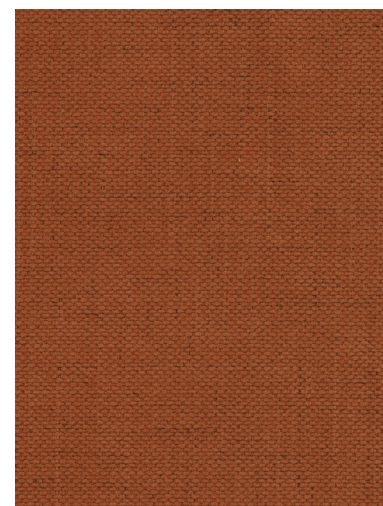
**Moly 79** // *Royal Blue*



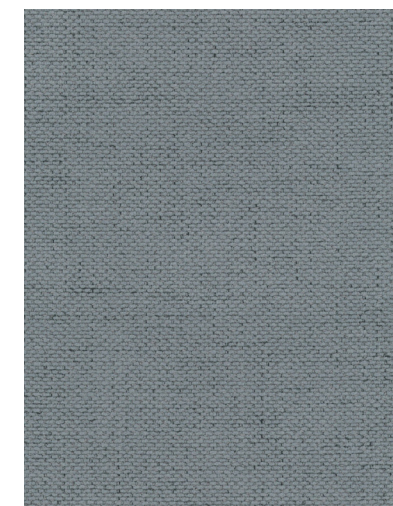
**Moly 70** // *Light Grey*



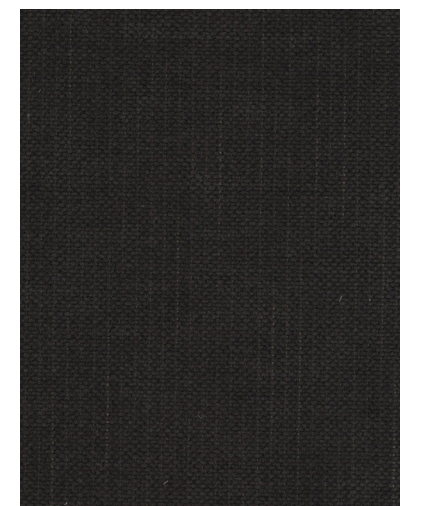
**Moly 97** // *Anthracite*



**Moly 54** // *Brick*



**Moly 74** // *Light Blue*









**Moly 99** // *Black*



# Moly

type: structured fabric

INDEX OF FABRIC: 138

<b>Composition</b>   Skład:	100% PES
<b>Weight</b>   Gramatura:	380 g/m <sup>2</sup> (+/- 5%)
<b>Abrasion resistance</b>   Odporność na ścieranie:	80 000 - 90 000 rubs / suwów
<b>Fuzzing and pilling</b>   Mechacenie i pilling:	4 - 5
<b>Colour fastness to artificial light</b>   Odporność wybarwień na światło:	light 4 - 5   medium 5   dark >5
<b>Dry rubbing</b>   Tarcie suche	4 - 5
<b>Wet rubbing</b>   Tarcie mokre	4 - 5
<b>Seam Slippage</b>   Przesunięcie w szwie	2,1 - 2,5 warp / osnowa 1,4 - 1,6 weft / wątek
<b>Cigarette test</b>   Test papierosa:	✓
<b>Maintenance</b>   Konserwacja:	     



EN1021-1 BSS852:  
Part 1:1979 Ignition  
source 0 (Cigarette)  
CAL TB 117



#### YOUR CHOICE IS A GREAT CHOICE!

The **Micadoni Pro** team is committed to offering personalized guidance in selecting exceptional fabrics and advising you on products that best reflect your vision. We invite you to get in touch and benefit from our expertise.

[www.micadoni.com/contact](http://www.micadoni.com/contact) | [sales@micadonipro.com](mailto:sales@micadonipro.com)

# micadoni

[micadonipro.com](http://micadonipro.com) | [micadoni.com](http://micadoni.com) | [@micadoni.home](https://www.instagram.com/micadoni.home)

# Moly

type: structured fabric

INDEX OF FABRIC: 138