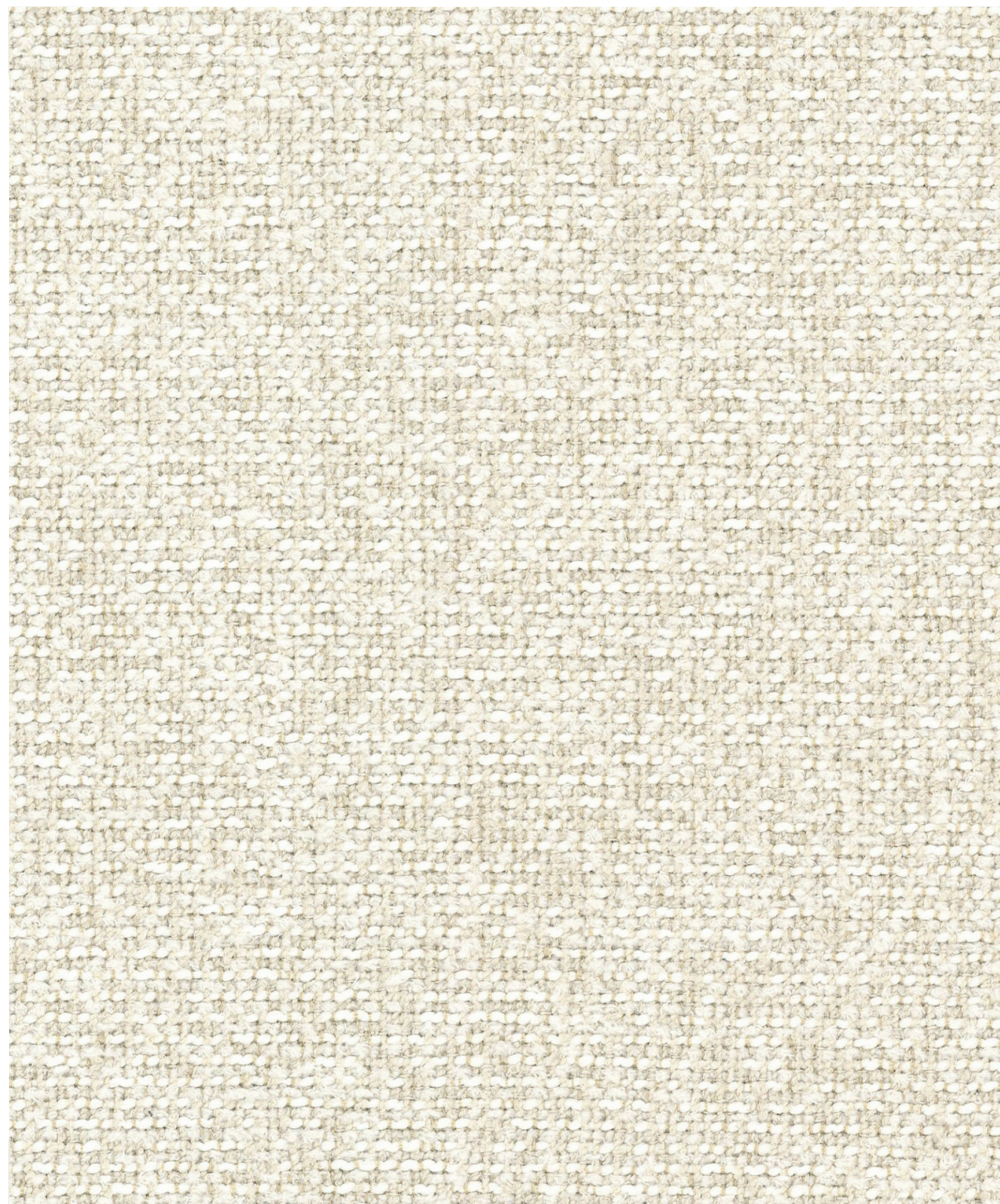


# Puente

type: structured

INDEX OF FABRIC: 201

micadoni.com | micadonipro.com



**Puente 3** // *Light Beige Melange*



**Puente 3** // *Light Beige Melange*



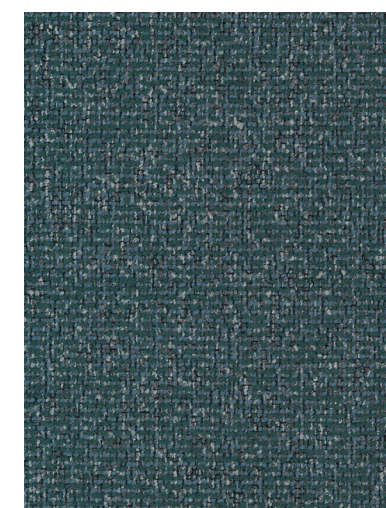
**Puente 6** // *Beige Melange*



**Puente 80** // *Light Grey Melange*



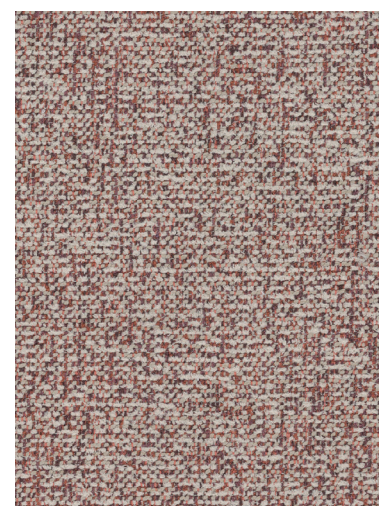
**Puente 33** // *Moss Green Melange*



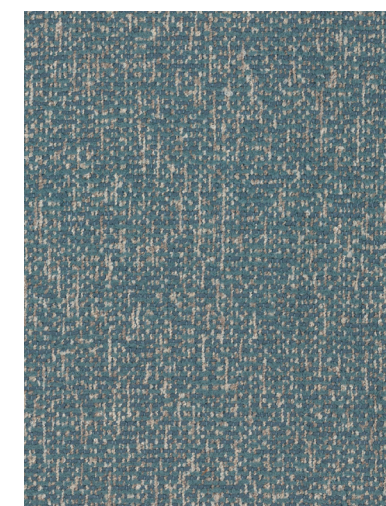
**Puente 39** // *Green Blue Melange*



**Puente 41** // *Sunflower Melange*



**Puente 68** // *Pink Melange*



**Puente 73** // *Blue Melange*









**Puente 94** // *Dark Grey Melange*

Puente | structured

# Puente

type: structured

INDEX OF FABRIC: 201

<b>Composition</b>   Skład:	95% PES, 5% CO
<b>Weight</b>   Gramatura:	500 g/m <sup>2</sup> (+/- 5%)
<b>Abrasion resistance</b>   Odporność na ścieranie:	>100 000 rubs / suwów
<b>Fuzzing and pilling</b>   Mechacenie i pilling:	4
<b>Colour fastness to artificial light</b>   Odporność wybarwień na światło:	>5
<b>Dry rubbing</b>   Tarcie suche	5
<b>Wet rubbing</b>   Tarcie mokre	4-5
<b>Seam Slippage</b>   Przesunięcie w szwie	2,6 - 3,0 warp / osnowa 3,7 - 4,2 weft / wątek
<b>Cigarette test</b>   Test papierosa:	✓
<b>Maintenance</b>   Konserwacja:	     



EN1021-1 BSS852:  
Part 1:1979 Ignition  
source 0 (Cigarette)  
CAL TB 117



#### YOUR CHOICE IS A GREAT CHOICE!

The **Micadoni Pro** team is committed to offering personalized guidance in selecting exceptional fabrics and advising you on products that best reflect your vision. We invite you to get in touch and benefit from our expertise.

[www.micadoni.com/contact](http://www.micadoni.com/contact) | [sales@micadonipro.com](mailto:sales@micadonipro.com)

# micadoni

[micadonipro.com](http://micadonipro.com) | [micadoni.com](http://micadoni.com) | @micadoni.home

# Puente

type: structured

INDEX OF FABRIC: 201