

GAZZDA

Loop Side Table

Product sheet

design by
Mustafa Čohadžić



Loop Side Table

Product facts

Materials

Plate	Oak Veneer / Linoleum
Wood finish	Lacquered
Metal	Powder-Coated Steel

Technical features

Plate

The table plate is made out of oak veneer (available in natural or black colour lacquered options) or linoleum (natural, warm to the touch, smooth, antibacterial surface material, available in Nero and Mushroom colours). Both top surface options - oak veneer and linoleum, are glued on the birch plywood core.

Wood finish

Available in two lacquer finishes (colours): as a Natural lacquer which retain the wood's natural state, and and Black lacquer, which gives the oak a uniform and sleek appearance, while preserving the natural look and texture of the wood.

Metal base

Steel base has a powder-coated and fine structure granulated surface finish available in two colours, as Black RAL 9005 or Mushroom RAL 1013 color options.

Cleaning

Please see [Product](#) or [Material](#) page on our website.

Notes to consider

Load capacity

The maximum load capacity of the product is 3 kg.

Handling note

The metal construction should be used when picking up the assembled product from the ground. Picking up the product by table plate may cause product damage.

Variations

Natural variations in wood color and surface may occur. Regular maintenance will ensure the wood preserves its authentic beauty and can last for generations.

Product changes

Please note that Gazzda reserves the right to alter construction and design without notice.

Dimensions (tolerances)

The dimensions shown are indicative, they may vary due to the natural properties of wood, season, or manufacturing processes. Deviations from the specified size may occur, usually no more than 1 cm.

For all additional inquiries regarding Loop Side Table please feel free to [contact us](#).

Loop Side Table

Plate Oak Veneer / Linoleum, Base Powder-coated steel

Basic info

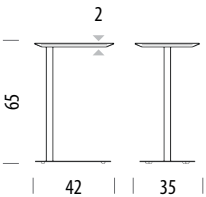
Design	Mustafa Čohadžić
Product size	W: 42, D: 35, H: 65
Packaging	W: 62, D: 42, H: 17
Volume	0,045 m³
Net weight	8,3 kg
Gross weight	11,3 kg



Item no. 503		Revolving plate • Assembly 5 min / 1 person		
Additional dimensions		Width	Depth	Thickness (cm)
Plate		42	35	2

Top plate shape overview

Form shape	Trapezoid	
------------	-----------	--

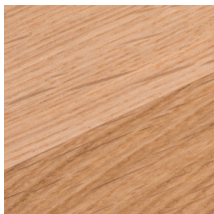


Loop Side Table

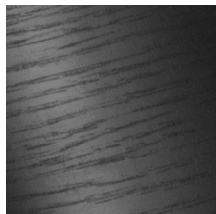
Available wood types and finishes

Version: 05-08-2025

OAK VENEER



Lacquered Oak
Transparent



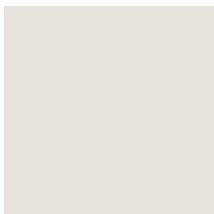
Lacquered Oak
RAL 9005 Black

Loop Side Table

Available linoleum options

Version: 05-08-2025

LINOLEUM



4176 Mushroom



4023 Nero

Note

Desktop linoleum colors are chosen to go in line with powder coated metal base: Linoleum Nero with Black RAL 9005 and Mushroom linoleum Mushroom RAL 1013.

Loop Side Table

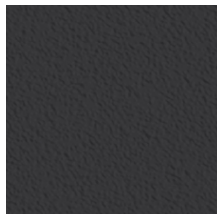
Available metal finishes

Version: 05-08-2025

POWDER-COATED



4176 Mushroom



4023 Nero

Note

Desktop linoleum colors are chosen to go in line with powder coated metal base: Linoleum Nero with Black RAL 9005 and Mushroom linoleum Mushroom RAL 1013.